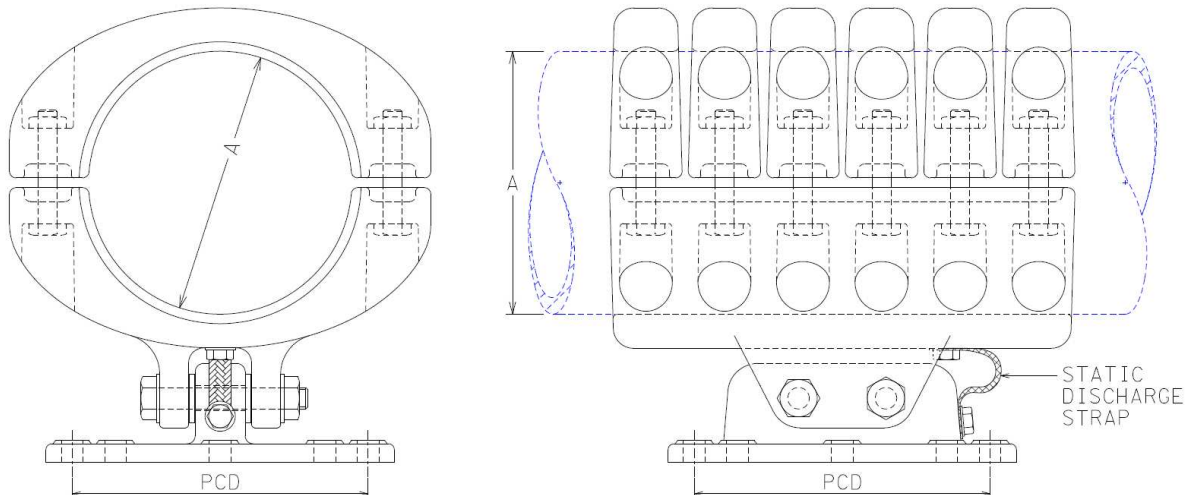



CODE	TUBE DIAMETER "A" (mm)	PCD (mm)	90°C RATED CURRENT (A)	SAP NUMBER
ECC-PI-F-A	80	76	2,000	0217255
ECC-PI-F-B	80	127	2,000	0217256
ECC-PI-F-E	120	76	3,150	0206342
ECC-PI-F-F	120	127	3,150	0206343




CODE	TUBE DIAMETER "A" (mm)	PCD (mm)	90°C RATED CURRENT (A)	SAP NUMBER
ECC-PI-F-J	200	225	4,000	0554920

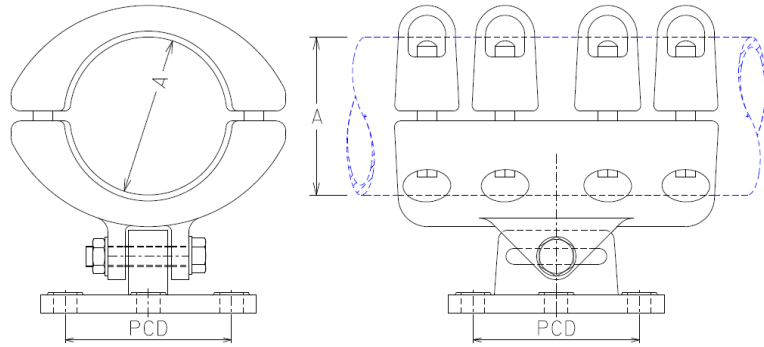
NOTE: DRAWINGS NOT FOR MANUFACTURING PURPOSES

ITEM		:- CLAMP, TUBE: ECC-PI-F; COUPLING, POST INSULATOR MOUNTED, FIXED									
STANDARD		:-									
UNIQUE IDENTIFIER		:- 240-53113923									
7	DRAWINGS UPDATED, TABLES AND ITEM ECC-PI-F-J ADDED.				P.A.T + T. MARIAS	I. HILL	T. MARIAS	19.02.2015			
6	ITEM TABLE ADDED, SHORT AND TECHNICAL DESCRIPTIONS CHANGED AND ADDITIONAL TUBE CLAMPS ADDED				P.A.T.	I. HILL	T. MARAIS	07/07/2014			
5	CLAMP TBFC80-76 & TBFC80-127 ADDED. SHT 3 ADDED..				VvZ	C.B.C.	C.CLARK	07/10/2005			
REV	REVISION DESCRIPTION				BY	CHKD	AUTH	DATE	REF. DRAWINGS		
AUTH:		PHIL CROWDY	DATE:	06/97	SCALE NTS				SAP No:		
CHKD:		C.B. CLARK	DATE:	06/97	CAD REF: SERIES 6000						
DRAWN:		J.F.SCHOLTZ	DATE:	06/97	FILE No: 6086		D-DT-6086		SET	SHEET	REV
									5	1	7

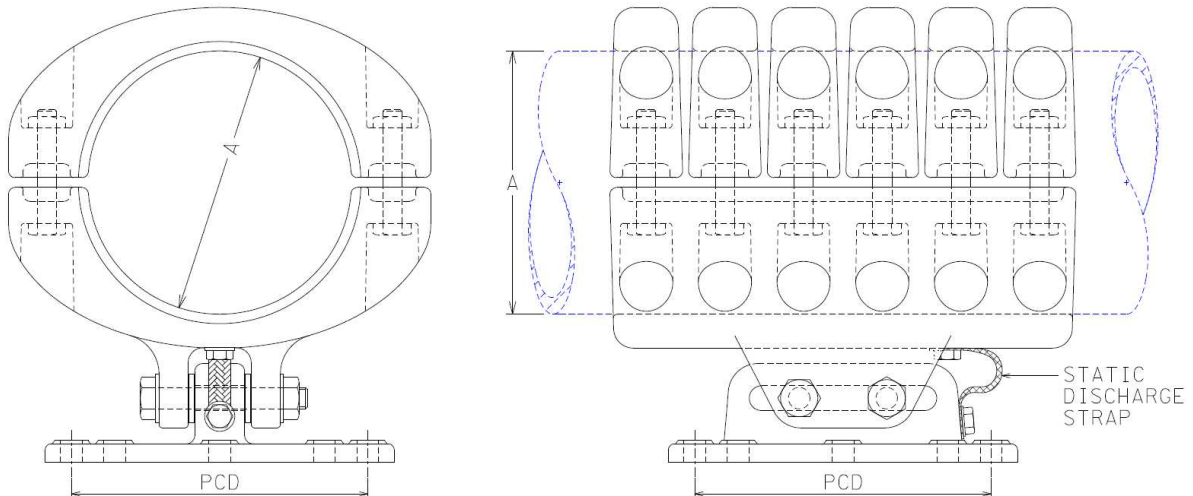


D-DT-6086

SPEC SHEET										
SAP MATERIAL No.:		0217255								
SHORT DESCRIPTION:		CLAMP,TUBE:ECC-PI-F-A;80/80/76;FIX								
TECH. DESCRIPTION: CLAMP, TUBE: TYPE: ECC-PI-F-A; COMMERCIAL SIZE: 80/80/76; FIX; MATERIAL: AI ALLOY< 0.1% Cu; TUBE 1 DIAMETER ACCOMMODATED: 80 MM; TUBE 2 DIAMETER ACCOMMODATED: 80 MM; PITCH CIRCLE DIAMETER: 76 MM; CLAMP CURRENT RATING: 2000 A; MAXIMUM OPERATING POTENTIAL: 145 KV; STANDARD: UNIQUE IDENTIFIER 240-53113923; POST INSULATOR MOUNTED COUPLING CLAMP, FIXED; ESKOM DRAWING No. D-DT-6086 *										
SAP MATERIAL No.:		0217256								
SHORT DESCRIPTION:		CLAMP,TUBE:ECC-PI-F-B;80/80/127;FIX								
TECH. DESCRIPTION: CLAMP, TUBE: TYPE: ECC-PI-F-B; COMMERCIAL SIZE: 80/80/127; FIX; MATERIAL: AI ALLOY< 0.1% Cu; TUBE 1 DIAMETER ACCOMMODATED: 80 MM; TUBE 2 DIAMETER ACCOMMODATED: 80 MM; PITCH CIRCLE DIAMETER: 127 MM; CLAMP CURRENT RATING: 2000 A; MAXIMUM OPERATING POTENTIAL: 145 KV; STANDARD: UNIQUE IDENTIFIER 240-53113923; POST INSULATOR MOUNTED COUPLING CLAMP, FIXED; ESKOM DRAWING No. D-DT-6086 *										
SAP MATERIAL No.:		0206342								
SHORT DESCRIPTION:		CLAMP,TUBE:ECC-PI-F-E;120/120/76;FIX								
TECH. DESCRIPTION: CLAMP, TUBE: TYPE: ECC-PI-F-E; COMMERCIAL SIZE: 120/120/76; FIX; MATERIAL: AI ALLOY< 0.1% Cu; TUBE 1 DIAMETER ACCOMMODATED: 120 MM; TUBE 2 DIAMETER ACCOMMODATED: 120 MM; PITCH CIRCLE DIAMETER: 76; CLAMP CURRENT RATING: 3150 A; MAXIMUM OPERATING POTENTIAL: 145 KV; STANDARD: UNIQUE IDENTIFIER 240-53113923; POST INSULATOR MOUNTED COUPLING CLAMP, FIXED; ESKOM DRAWING No. D-DT-6086 *										
SAP MATERIAL No.:		0206343								
SHORT DESCRIPTION:		CLAMP,TUBE:ECC-PI-F-F;120/120/127;FIX								
TECH. DESCRIPTION: CLAMP, TUBE: TYPE: ECC-PI-F-F; COMMERCIAL SIZE: 120/120/127; FIX; MATERIAL: AI ALLOY< 0.1% Cu; TUBE 1 DIAMETER ACCOMMODATED: 120 MM; TUBE 2 DIAMETER ACCOMMODATED: 120 MM; PITCH CIRCLE DIAMETER: 127 MM; CLAMP CURRENT RATING: 3150 A; MAXIMUM OPERATING POTENTIAL: 145 KV; STANDARD: UNIQUE IDENTIFIER 240-53113923; POST INSULATOR MOUNTED COUPLING CLAMP, FIXED; ESKOM DRAWING No. D-DT-6086 *										
SAP MATERIAL No.:		0554920								
SHORT DESCRIPTION:		CLAMP, TUBE:ECC-PI-F-J ;200/200/225;FIX								
TECH. DESCRIPTION: CLAMP, TUBE: TYPE: ECC-PI-F-J; COMMERCIAL SIZE: 200/200/225; FIX; MATERIAL: AI ALLOY< 0.1% Cu; TUBE 1 DIAMETER ACCOMMODATED: 200 MM; TUBE 2 DIAMETER ACCOMMODATED: 200 MM; PITCH CIRCLE DIAMETER: 225 MM; CLAMP CURRENT RATING: 4000 A; MAXIMUM OPERATING POTENTIAL: 800 KV; STANDARD: UNIQUE IDENTIFIER 240-53113923; POST INSULATOR MOUNTED COUPLING CLAMP, FIXED; ESKOM DRAWING No. D-DT-6086 *										
7	DRAWINGS UPDATED, TABLES AND ITEM ECC-PI-F-J ADDED.				P.A.T + T. MARIAS	I. HILL	T. MARIAS	19.02.2015		
6	ITEM TABLE ADDED, SHORT AND TECHNICAL DESCRIPTIONS CHANGED AND ADDITIONAL TUBE CLAMPS ADDED				P.A.T.	I. HILL	T. MARAIS	07/07/2014		
5	CLAMP TBFC80-76 & TBFC80-127 ADDED. SHT 3 ADDED..				VvZ	C.B.C.	C.CLARK	07/10/2005		
REV	REVISION DESCRIPTION				BY	CHKD	AUTH	DATE	REF. DRAWINGS	
AUTH:	PHIL CROWDY	DATE:	06/97	SCALE NTS	 D-DT-6086			SAP No:		
CHKD:	C.B. CLARK	DATE:	06/97	CAD REF:				0217255	0206342	
				SERIES 6000				0217256	0206343	
DRAWN:	J.F.SCHOLTZ	DATE:	06/97	FILE No: 6086				SET	SHEET	REV
								5	2	7




CODE	TUBE DIAMETER "A" (mm)	PCD (mm)	90°C RATED CURRENT (A)	SAP NUMBER
ECC-PI-S-A	80	76	2,000	0401690
ECC-PI-S-B	80	127	2,000	0401693
ECC-PI-S-E	120	76	3,150	0206330
ECC-PI-S-F	120	127	3,150	0206341




CODE	TUBE DIAMETER "A" (mm)	PCD (mm)	90°C RATED CURRENT (A)	SAP NUMBER
ECC-PI-S-J	200	225	4,000	0586036
ECC-PI-S-K	250	225	4,000	0586037
ECC-PI-S-L	200	127	4,000	0586038

NOTE: DRAWINGS NOT FOR MANUFACTURING PURPOSES

ITEM		:- CLAMP, TUBE: ECC-PI-S; COUPLING, POST INSULATOR MOUNTED, SLIDE									
STANDARD		:-									
UNIQUE IDENTIFIER		:- 240-53113923									
7	DRAWINGS UPDATED, TABLES AND ITEM ECC-PI-F-J ADDED.				P.A.T + T. MARIAS	I. HILL	T. MARIAS	19.02.2015			
6	ITEM TABLE ADDED, SHORT AND TECHNICAL DESCRIPTIONS CHANGED AND ADDITIONAL TUBE CLAMPS ADDED				P.A.T.	I. HILL	T. MARAIS	07/07/2014			
5	CLAMP TBFC80-76 & TBFC80-127 ADDED. SHT 3 ADDED..				VvZ	C.B.C.	C.CLARK	07/10/2005			
REV	REVISION DESCRIPTION				BY	CHKD	AUTH	DATE	REF. DRAWINGS		
AUTH:	PHIL CROWDY	DATE:	06/97	SCALE NTS	 D-DT-6086			SAP No:			
CHKD:	C.B. CLARK	DATE:	06/97	CAD REF: SERIES 6000							
DRAWN:	J.F.SCHOLTZ	DATE:	06/97	FILE No: 6086				SET	SHEET	REV	
								5	3	7	

SPEC SHEET

SAP MATERIAL No.:		0401690						
SHORT DESCRIPTION:		CLAMP,TUBE:ECC-PI-S-A;80/80/76;SLIDE						
TECH. DESCRIPTION:								
CLAMP, TUBE: TYPE: ECC-PI-S-A; COMMERCIAL SIZE: 80/80/76; SLIDE; MATERIAL: AI ALLOY< 0.1% Cu; TUBE 1 DIAMETER ACCOMMODATED: 80 MM; TUBE 2 DIAMETER ACCOMMODATED: 80 MM; PITCH CIRCLE DIAMETER: 76 MM; CLAMP CURRENT RATING: 2000 A; MAXIMUM OPERATING POTENTIAL: 145 KV; STANDARD: UNIQUE IDENTIFIER 240-53113923; POST INSULATOR MOUNTED COUPLING CLAMP, SLIDE; ESKOM DRAWING No. D-DT-6086 *								
SAP MATERIAL No.:		0401693						
SHORT DESCRIPTION:		CLAMP,TUBE:ECC-PI-S-B;80/80/127;SLIDE						
TECH. DESCRIPTION:								
CLAMP, TUBE: TYPE: ECC-PI-S-B; COMMERCIAL SIZE: 80/80/127; SLIDE; MATERIAL: AI ALLOY< 0.1% Cu; TUBE 1 DIAMETER ACCOMMODATED: 80 MM; TUBE 2 DIAMETER ACCOMMODATED: 80 MM; PITCH CIRCLE DIAMETER: 127 MM; CLAMP CURRENT RATING: 2000 A; MAXIMUM OPERATING POTENTIAL: 145 KV; STANDARD: UNIQUE IDENTIFIER 240-53113923; POST INSULATOR MOUNTED COUPLING CLAMP, SLIDE; ESKOM DRAWING No. D-DT-6086 *								
SAP MATERIAL No.:		0206330						
SHORT DESCRIPTION:		CLAMP,TUBE:ECC-PI-S-E;120/120/76;SLIDE						
TECH. DESCRIPTION:								
CLAMP, TUBE: TYPE: ECC-PI-S-E; COMMERCIAL SIZE: 120/120/76; SLIDE; MATERIAL: AI ALLOY< 0.1% Cu; TUBE 1 DIAMETER ACCOMMODATED: 120 MM; TUBE 2 DIAMETER ACCOMMODATED: 120 MM; PITCH CIRCLE DIAMETER: 76 MM; CLAMP CURRENT RATING: 3150 A; MAXIMUM OPERATING POTENTIAL: 145 KV; STANDARD: UNIQUE IDENTIFIER 240-53113923; POST INSULATOR MOUNTED COUPLING CLAMP, SLIDE; ESKOM DRAWING No. D-DT-6086 *								
SAP MATERIAL No.:		0206341						
SHORT DESCRIPTION:		CLAMP,TUBE:ECC-PI-S-F;120/120/127;SLIDE						
TECH. DESCRIPTION:								
CLAMP, TUBE: TYPE: ECC-PI-S-F; COMMERCIAL SIZE: 120/120/127; SLIDE; MATERIAL: AI ALLOY< 0.1% Cu; TUBE 1 DIAMETER ACCOMMODATED: 120 MM; TUBE 2 DIAMETER ACCOMMODATED: 120 MM; PITCH CIRCLE DIAMETER: 127 MM; CLAMP CURRENT RATING: 3150 A; MAXIMUM OPERATING POTENTIAL: 145 KV; STANDARD: UNIQUE IDENTIFIER 240-53113923; POST INSULATOR MOUNTED COUPLING CLAMP, SLIDE; ESKOM DRAWING No. D-DT-6086 *								
7	DRAWINGS UPDATED, TABLES AND ITEM ECC-PI-F-J ADDED.			P.A.T + T. MARIAS	I. HILL	T. MARIAS	19.02.2015	
6	ITEM TABLE ADDED, SHORT AND TECHNICAL DESCRIPTIONS CHANGED AND ADDITIONAL TUBE CLAMPS ADDED			P.A.T.	I. HILL	T. MARAIS	07/07/2014	
5	CLAMP TBFC80-76 & TBFC80-127 ADDED. SHT 3 ADDED..			VvZ	C.B.C.	C.CLARK	07/10/2005	
REV	REVISION DESCRIPTION			BY	CHKD	AUTH	DATE	REF. DRAWINGS
AUTH:	PHIL CROWDY	DATE:	06/97	SCALE NTS			SAP No:	
CHKD:	C.B. CLARK	DATE:	06/97	CAD REF:			0401690	0206330
				SERIES 6000			0401693	0206341
DRAWN:	J.F.SCHOLTZ	DATE:	06/97	FILE No: 6086	D-DT-6086		SET	SHEET
							5	4

SPEC SHEET

SAP MATERIAL No.:		0586036					
SHORT DESCRIPTION:		CLAMP,TUBE:ECC-PI-S-J;200/200/225;SLIDE					
TECH. DESCRIPTION:							
CLAMP, TUBE: TYPE: ECC-PI-S-J; COMMERCIAL SIZE: 200/200/225; SLIDE; MATERIAL: AI ALLOY< 0.1% Cu; TUBE 1 DIAMETER ACCOMMODATED: 200 MM; TUBE 2 DIAMETER ACCOMMODATED: 200 MM; PITCH CIRCLE DIAMETER: 225 MM; CLAMP CURRENT RATING: 4000 A; MAXIMUM OPERATING POTENTIAL: 800 KV; STANDARD: UNIQUE IDENTIFIER 240-53113923; POST INSULATOR MOUNTED COUPLING CLAMP; SLIDE; ESKOM DRAWING No. D-DT-6086 *							
SAP MATERIAL No.:		0586037					
SHORT DESCRIPTION:		CLAMP,TUBE:ECC-PI-S-K;250/250/225;SLIDE					
TECH. DESCRIPTION:							
CLAMP, TUBE: TYPE: ECC-PI-S-K; COMMERCIAL SIZE: 250/250/225; SLIDE; MATERIAL: AI ALLOY< 0.1% Cu; TUBE 1 DIAMETER ACCOMMODATED: 250 MM; TUBE 2 DIAMETER ACCOMMODATED: 250 MM; PITCH CIRCLE DIAMETER: 225 MM; CLAMP CURRENT RATING: 4000 A; MAXIMUM OPERATING POTENTIAL: 800 KV; STANDARD: UNIQUE IDENTIFIER 240-53113923; POST INSULATOR MOUNTED COUPLING CLAMP; SLIDE; ESKOM DRAWING No. D-DT-6086 *							
SAP MATERIAL No.:		0586038					
SHORT DESCRIPTION:		CLAMP,TUBE:ECC-PI-S-L;200/200/127;SLIDE					
TECH. DESCRIPTION:							
CLAMP, TUBE: TYPE: ECC-PI-S-L; COMMERCIAL SIZE: 200/200/127; SLIDE; MATERIAL: AI ALLOY< 0.1% Cu; TUBE 1 DIAMETER ACCOMMODATED: 200 MM; TUBE 2 DIAMETER ACCOMMODATED: 200 MM; PITCH CIRCLE DIAMETER: 127 MM; CLAMP CURRENT RATING: 4000 A; MAXIMUM OPERATING POTENTIAL: 800 KV; STANDARD: UNIQUE IDENTIFIER 240-53113923; POST INSULATOR MOUNTED COUPLING CLAMP; SLIDE; ESKOM DRAWING No. D-DT-6086 *							
7	DRAWINGS UPDATED, TABLES AND ITEM ECC-PI-F-J ADDED.		P.A.T + T. MARIAS	I. HILL	T. MARIAS	19.02.2015	
6	ITEM TABLE ADDED, SHORT AND TECHNICAL DESCRIPTIONS CHANGED AND ADDITIONAL TUBE CLAMPS ADDED		P.A.T.	I. HILL	T. MARAIS	07/07/2014	
5	CLAMP TBFC80-76 & TBFC80-127 ADDED. SHT 3 ADDED..		VvZ	C.B.C.	C.CLARK	07/10/2005	
REV	REVISION DESCRIPTION		BY	CHKD	AUTH	DATE	REF. DRAWINGS
AUTH:	PHIL CROWDY	DATE:	06/97	SCALE		SAP No:	
CHKD:	C.B. CLARK	DATE:	06/97	NTS		0586036	
				CAD REF:		0586037	
DRAWN:	J.F.SCHOLTZ	DATE:	06/97	SERIES 6000		SET	
				FILE No:		SHEET	
				6086		REV	
				D-DT-6086		5	7